

Lowee's Group Tours presents...

# The Hawaiian Islands

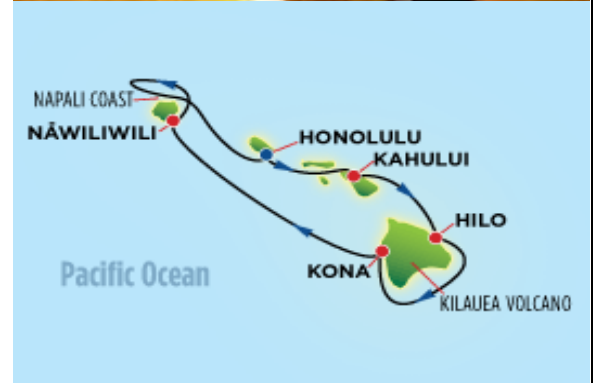
April 13-20, 2013

## Norwegian's Pride of America

### Itinerary

Date	Port	Arrive	Depart
Day 1- April 13	Honolulu		7:00 PM
Day 2 - April 14	Maui	8:00AM	Overnight
Day 3 - April 15	Maui		6:00 PM
Day 4 - April 16	Hilo	8:00 AM	6:00 PM
Day 5 - April 17	Kona	7:00 AM	6:00 PM
Day 6 - April 18	Kauai	8:00 AM	overnight
Day 7 - April 19	Kauai		2:00 PM
Day 8 - April 20	Honolulu	7:00 AM	

The Pride of America is designed to be your floating hotel room, allowing you to explore all the islands have to offer without having to "pack up" and fly to each island. It is important to note that this trip is more about your destinations and excursions than about the ship. You have extended time at each island to enjoy and explore and no "days at sea". While the Pride of America offers wonderful dining, entertainment and activities it is small enough to navigate and disembark in a timely manner.



#### Cost:

Balcony Cabin (Category BC) From \$3225pp Double Occupancy  
 Ocean View (Category OA) From \$2925pp Double Occupancy  
 Inside Stateroom (Category IA) From \$2625pp Double Occupancy

**Post night at the Waikiki Beach Marriott (Pearl Harbor)**

**\$159pp Double Occupancy**

Insurance available upon request / Call for 3rd and 4th person rates

Payroll deductions available for Pinnacle employees

**\*\*Passport Suggested\*\***

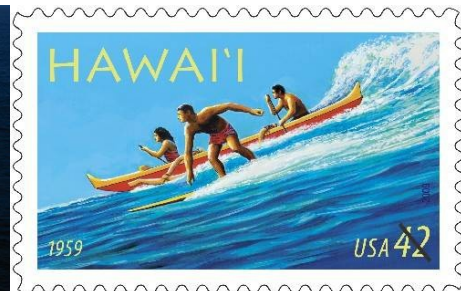
**Valid Government or State ID and Birth Certificated Required without a passport.**

#### INCLUDES

- Roundtrip Motorcoach to/from Newark, NJ
- Roundtrip Airfare
- Cruise Fare
- Onboard Entertainment & Meals
- Transfers (Airport to Cruise / Cruise to Airport)
- Government Taxes & Fees

- Deposit: A deposit of \$450 Per person is required to confirm the space. Major credit cards accepted.
- Cancellation: If necessary must be done before December 14, 2012. After this date penalties may apply.
- Final Payment: January 28, 2013
- Airfare: Entire group may not be on same flight.
- Name changes may incur penalties from the cruise line or airline. Please be sure your registration is correct and your name is as it appears on your passport.
- Triples / Quad Cabins: If you need a triple or quad cabin, every attempt will be made to accommodate within the block space we have. If none are available we may have to secure a cabin outside of our block at different pricing.
- Space: Norwegian may recall any unsold space at anytime without notice. Your deposit is refundable so it is recommended to book early to secure your cabin.
- If the price of oil goes over \$70 per barrel Norwegian reserves the right to add a surcharge to the price of the cruise.

**LOWEE'S GROUP TOURS, LLC**  
**P.O. Box 6658**  
**Harrisburg, PA 17112**  
**717-657-9658**  
**Jo@lowees.com**



Lowee's Group Tours, LLC referred to as "LGT, LLC" in this statement strives to serve our clients with quality tours from quality suppliers. As part of our effort to maintain a high level of service, please read our Responsibility Statement: "LGT, LLC" and its employees, officers, agents, neither own nor operate any person or entity which is to or does, provide goods or services for these trips or tours. "LGT, LLC" does not maintain any control over the personnel, equipment or operations of our suppliers that provide hotel accommodations, transportation, sightseeing, activities or other services connected with this tour. "LGT, LLC" and their respective employees, agents, representatives accept no liability whatsoever for any injury, damages, loss, accident, delay, or any other incident which may be caused by the negligence, defect, default of any company or person in performing these services. Responsibility is not accepted for losses, damage, injuries or expenses of any kind due to sickness, weather, strike, hostilities, wars, acts of terrorism, acts of nature, local laws or other causes. Should the quality of or level of execution by a supplier fall below the high standards of "LGT, LLC" we reserve the right to substitute a component of a tour or package to maintain the quality of said tour or package. "LGT, LLC" is not responsible for lost baggage or personal effects of any individual or group participating in the tour/trip arranged by "LGT, LLC". Individual travelers are responsible for purchasing a travel insurance policy, if desired, that will cover some or all of the expenses associated with any loss of personal effects or cancellation. After purchasing the insurance policy it is the responsibility of the traveler to insure they have received the printed policy. "LGT, INC" accepts no liability for insurance denials for any reason.

# RESERVATION FORM

Hawaiian Islands Cruise - Norwegian

Pride of America

April 13-20, 2013

Mail reservation form to:

Lowee's Group Tours

PO Box 6658

Harrisburg, PA 17112

Or fax to 717-652-9476 or call 717-657-9658 to register

Your Name(as listed on passport or ID)\_\_\_\_\_

Birthdate\_\_\_\_\_ Sex: \_\_\_\_\_ M \_\_\_\_\_ F

Address\_\_\_\_\_

City, State, Zip\_\_\_\_\_

Phone: \_\_\_\_\_ Email: \_\_\_\_\_

Roommate's name :(as on passport or ID)\_\_\_\_\_

Birthdate\_\_\_\_\_ Sex: \_\_\_\_\_ M \_\_\_\_\_ F

Make Checks Payable to: Lowee's Group Tours

Deposit in the amount of \$ \_\_\_\_\_ \$900 to secure reservations for \_\_\_\_\_ # of people.

*\*You may call in to Lowee's Group Tours with a Credit Card if you prefer.*

Cabin Category Requested:

Cat IA (Inside) :            Cat OA(Oceanview) :            Cat BC (Balcony) :            Other: call

Dining: Early                      Late

Insurance available for \$179-\$219pp

Special request to sit with another person/group\_\_\_\_\_

**Please submit names exactly as they appear on the ID you intend to use for travel.—Valid Passports Suggested**  
**You may cruise with valid State or Government issued ID & Birth Certificate**